

CREATE MODEL FROM IMAGE

Task

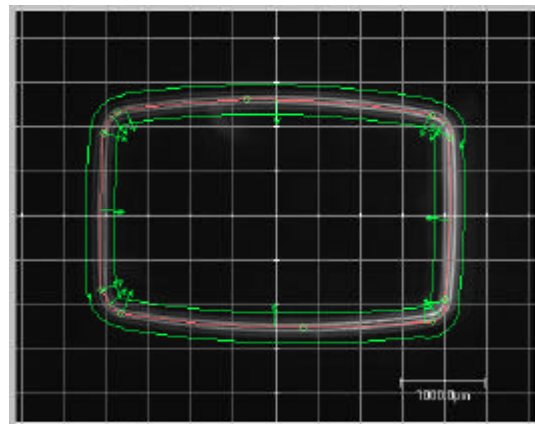
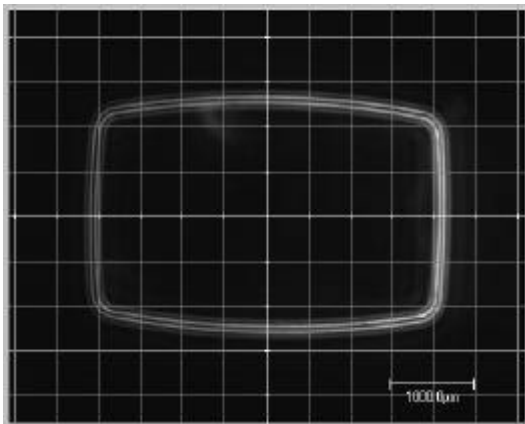
In order to produce reliable measurement data a nominal object description must be available. It can be a CAD file or a paper drawing. If such data is not available, a **model** of the object must be created interactively based on the video image.

Solution



By using the **Caliper Creator** a model of the object can be created simply by clicking on the projected video image of the object on the screen.

Benefit

The object can be measured with high reproducibility and accuracy even though object description is absent. The procedure is straightforward, and is carried out in the course of few minutes for most objects.



Step by Step

- Enter the Caliper Creator and select the Video tab. The projected outline of the object appears in the video window.
- Select the Arc Definition tool  and click three times along the object outline. A green arc segment will appear. The small arrow in the middle should point towards air. Repeat until the whole outline is covered. Adjust the segment lengths to obtain a best fit with the outline curvature.
- Use the Search Width slide ruler  to define an appropriate search width.
- Save the model as a file. Next, parameters to be measured are defined, and the model is ready for measurements.